

Did you know that one sunflower is made of lots of tiny flowers, or that trees have a stem?

Inside this wonderful eBook, you can find out about different types of plants and trees. You can learn about the parts of a plant and how we get food from plants.

Plants: Perfect Plants



Perfect Plants

Plants

Perfect Plants



Meet the Discovery Squad

Harry, Aisha, Blake, Holly and Riz are all great friends. They love to play, laugh and learn about the world together. Whatever the topic, if there are questions to be asked, answers to find or exploring to be done, the Discovery Squad is there to help. Join them as they find out more about plants in this non-fiction eBook.

Harry

Aisha

Blake

Holly

Riz



Contents

Plants	1
Parts of a Plant	5
How Plants Grow	7
Garden Plants	11
Wild Plants	15
Trees	19
Deciduous Trees	23
Evergreen Trees	25
Food From Plants	27
Quiz	35
Glossary	37
Index	41

Plants

Do you know what these are?



daisy



oak tree



cucumber



cabbage

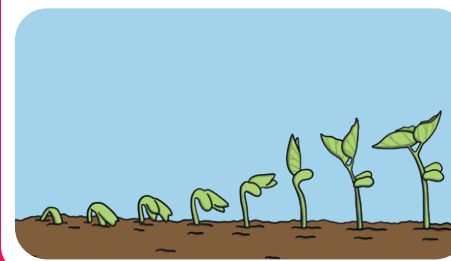


snowdrop



That's right, they are all types of plants! Plants are **living things**, just like you are.

Living things grow.



They move and react to their surroundings.

All **living things** need air, water and **nutrition** to help them to grow.

There are so many different types of plants!

Some are big.



beech tree

Some have flowers.



magnolia tree

Some are small.



bluebell

Some have **cones**.



larch tree

Plants can be found all over the world.

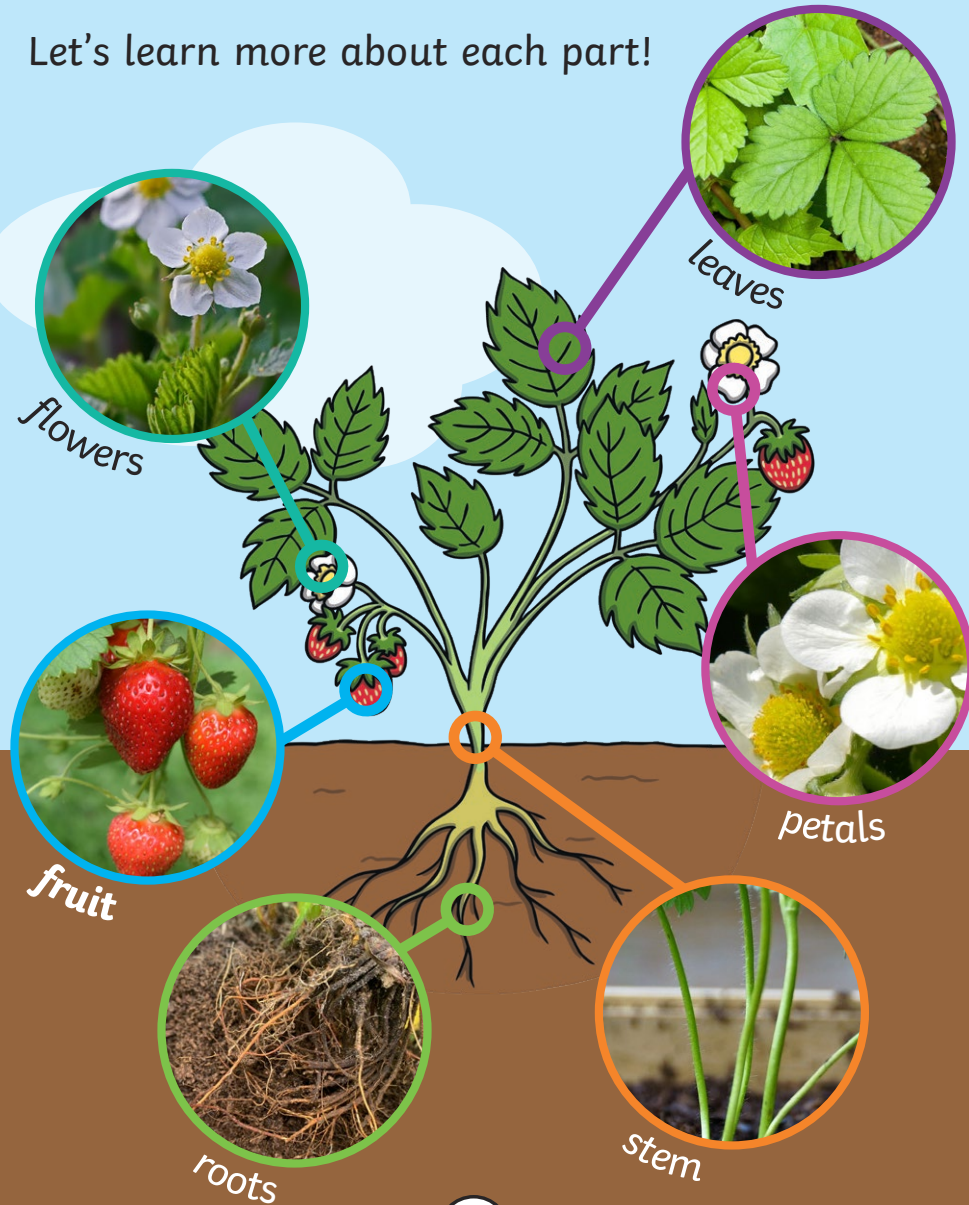
In this book, we will learn all about how plants are similar and different to one another.



Parts of a Plant

These are the different parts of a plant.

Let's learn more about each part!



roots

Roots take in water and **nutrients** from the soil and keep the plant in the ground.

flowers

Flowers attract insects and birds.

leaves

Leaves catch sunlight to help the plant to make its own food.

petals

Petals are special leaves that can be white or coloured that form part of the **flower**.

fruit

Fruit contains the plant's **seeds**.

stem

The **stem** holds the plant up and carries the water and **nutrients** from the **roots** to the **leaves** and **flowers**.

Some parts of plants grow in different **seasons**.
When do you think flowers usually grow?

How Plants Grow

Plants can grow from **seeds** or **bulbs**.



seeds

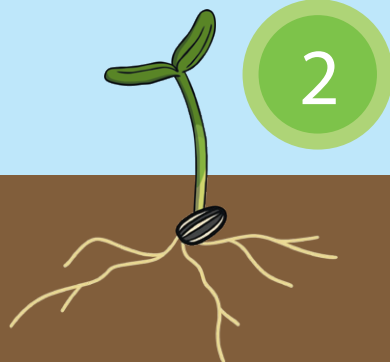


bulbs

1



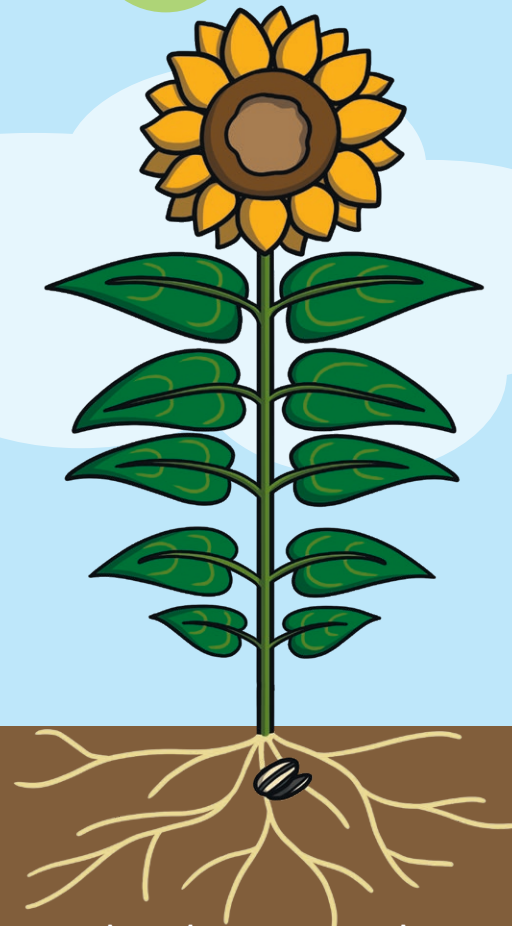
This plant grows from a **seed**.



When the time is right, the **seed** starts growing roots and a **shoot**.

7

3



The plant grows bigger and bigger and grows its stem and leaves. Some plants grow flowers and **fruit**.

4

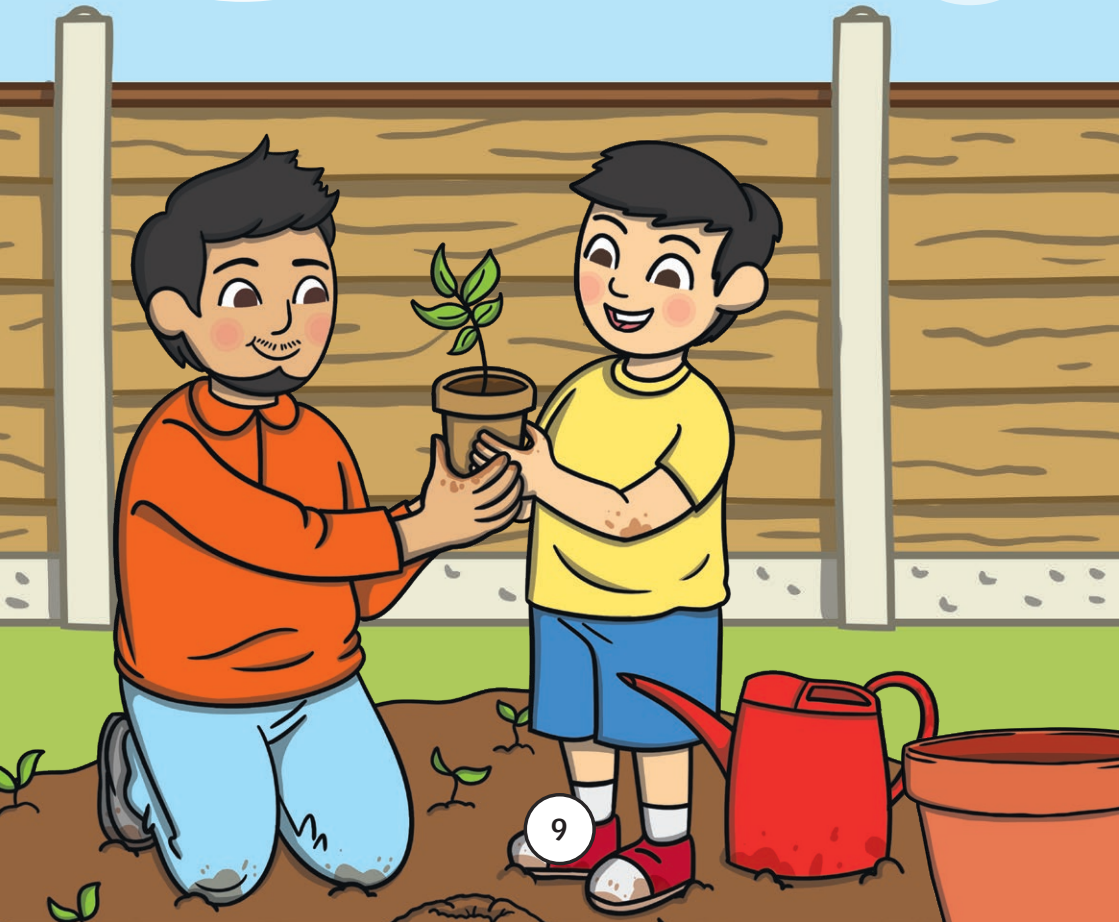


Seeds made by the plant can then go on to grow new plants!

8

Plants grow well when they get all the things they need.

- Have you ever helped an adult to look after a plant?
- What kind of things did you do?



Plants look very different when they are fully grown!



maple **seeds**



maple **tree**



daffodil **bulbs**



daffodil



Did You Know



One sunflower is actually made up of lots of tiny flowers!

Garden Plants

Plants that we choose to grow in a **garden** are called **garden plants**.

There are lots of different types of **garden plants**. Some grow flowers but others do not.



Did You Know



As well as growing flowers, the rose plant also grows a **fruit** called a rose hip. It usually looks like a red berry.



sweet pea



fern



rose



lavender



iris



Have you seen any of these types of **garden plants**?



marigold



hosta



pansy



fuschia

Bees are plant helpers.

Plants need bees to help them to make more plants.

Animals need plants for food.

So, bees are very important!



How can people get more bees in their garden?

- People can plant bee-friendly plants. Bees love plants like the common poppy, lavender and foxglove.
- They could even make their own bee hotel for the bees to rest in!



Wild Plants

Wild plants are plants that grow wherever their **seed** falls.

cow parsley



cow parsley flowers

dandelions



dandelion seeds

nettles



grass



Have you seen any of these types of **wild plants**?



wild garlic



plantain



blackberry brambles

When **wild plants** grow where we don't want them to, we call them **weeds**.

Where have you seen these **wild plants** grow?

dandelions



buttercup



clover



Did You Know



Most clovers have three leaves. Four-leaf clovers are very rare and many people think that finding one is lucky!



thistle



A thistle is prickly to touch. It grows its spiky leaves to help to **protect** itself from being eaten by animals!

Did You Know



Trees

A tree is also a type of plant.
Can you see the same parts?



fruit



leaves



blossom



bark

The rough bark protects the wood inside.



branches



roots



trunk

tree rings

Inside a tree trunk, a new ring appears every year. This helps **scientists** find out how old a tree is.



Did You Know?

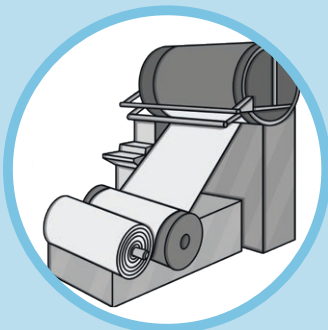


The trunk of a tree is its stem! It has to be strong to hold it up.



Why are trees important?

- Trees help to keep our **environment** healthy.
- They provide food and homes for many different animals.
- The wood from trees is used to build with. It is also used to make paper.



Can you spot anything around you that is made out of wood or paper?

It came from a tree!

Are these trees growing anywhere in your local area?

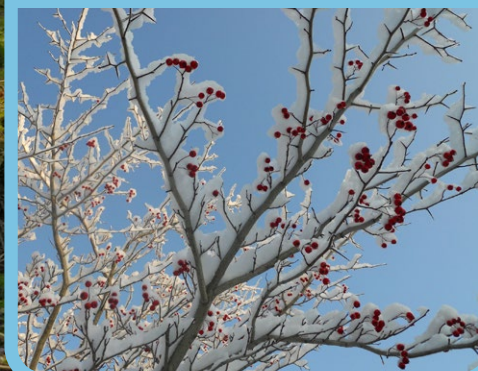
ash tree



cedar tree



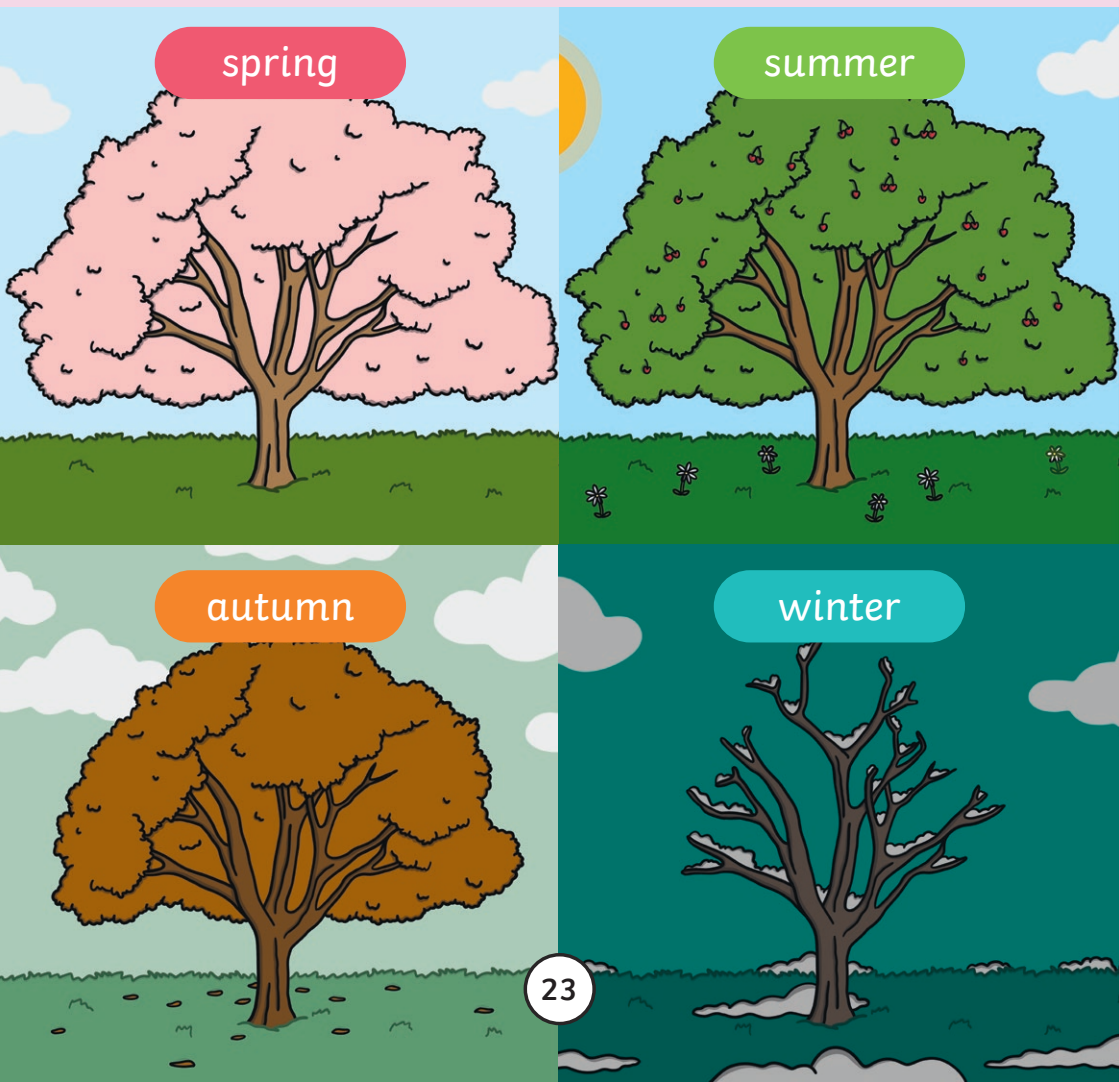
hawthorn tree



Deciduous Trees

Deciduous (say dee-sid-you-iss) trees are trees that lose their leaves in autumn.

Look at how this tree changes over the different **seasons**.



Here are some other **deciduous** trees.

- How are they similar to one another?
- How are they different?

aspen tree



pear tree



plum tree



elm tree



Evergreen Trees

Evergreen trees have their leaves all year round.

Look at how this tree keeps its leaves during the different **seasons**.

spring



summer



autumn



winter



25

Here are some other **evergreen** trees.

- How are they similar to one another?
- How are they different?



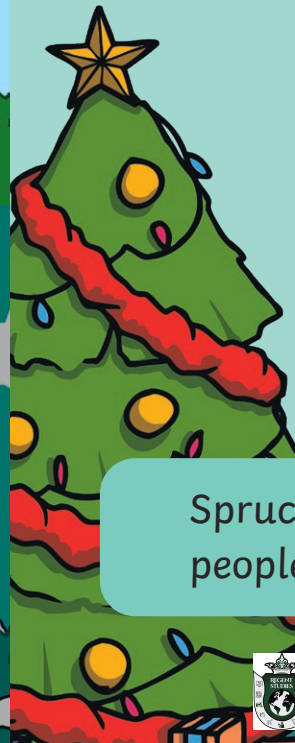
cedar tree



scots pine



spruce tree



Spruce trees are used by many people as Christmas trees!



Did You Know

?

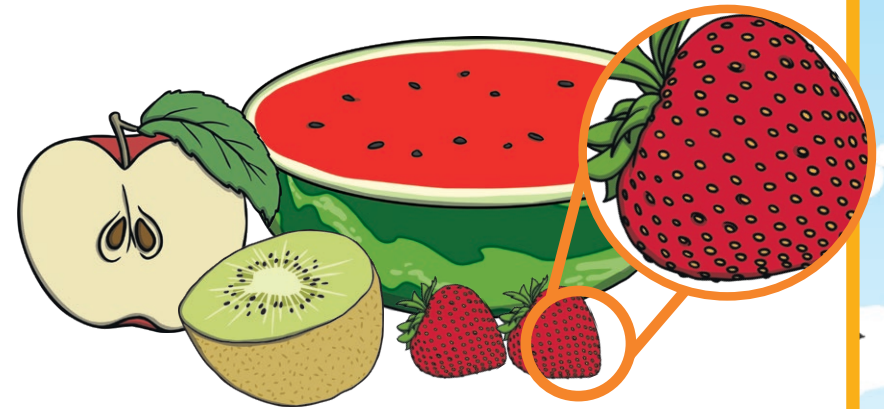
26

Food From Plants

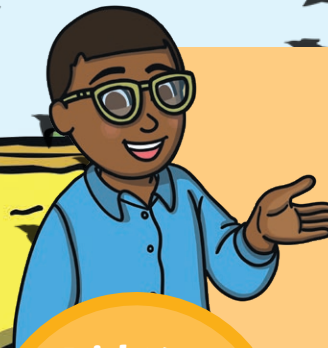
All of the **fruit** and **vegetables** we eat come from plants.



The **fruit** that grows from some plants contains their **seeds**.



If they are planted, these **seeds** can then grow into new plants with more **fruit**!



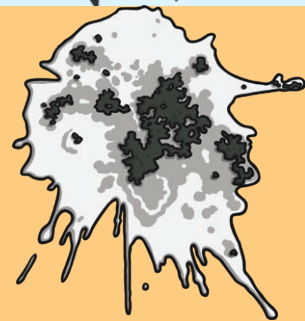
Did You Know



Seeds need to spread around so that new plants can grow in different places.

One way they spread is when animals eat the **fruit**.

How do you think this helps **seeds** to spread?



Fruit can grow on trees, **bushes** and plants that are often close to the ground. Here are some different types of **fruit** plants.



blackcurrant bush



raspberry bush



cherry tree



gooseberry plant



Did You Know



Not all **fruit** can be eaten by people. Never eat **fruit** you find, unless an adult says it's OK!

Vegetables come from different parts of the plant. Sometimes we can eat the whole plant and sometimes we can only eat part of it.



The **seeds** of some plants can be eaten, such as pumpkin **seeds**.

Did
Know



bulbs



Some **vegetables** are the **bulb** of a plant, such as onions and garlic.

leaves



Some **vegetables** are the leaves of the plant, such as cabbages.

flowers



Some **vegetables** are the flowers of the plant, such as cauliflower and broccoli.

Here are some more **vegetables**.

- Have you eaten any of them before?
- What is your favourite **vegetable**?

celery



turnips



kale



cauliflower



Did You Know ?

Most of the carrots we buy are orange, but they can also be purple, red, yellow and even white!



carrots



Quiz



1. How are plants and humans similar?
2. What do plants often grow from?
3. Name three different parts of a plant.
4. What are garden plants?
5. Name three garden plants.
6. What are wild plants?
7. Name three wild plants.
8. What is the difference between deciduous trees and evergreen trees?
9. Name one evergreen tree.
10. Name one deciduous tree.

Glossary

- blossom** flowers on a tree
- branches** parts of the tree that grow off of the main trunk; they grow leaves and sometimes blossom or fruit
- bulb** a part of a plant that can grow into a new plant
- bushes** low plants that grow lots of woody branches
- cones** cones are on some trees and contain seeds
- deciduous** trees that lose their leaves during autumn
- environment** the place in which plants and animals live



- evergreen** trees that keep their leaves all year round
- fruit** a part of a plant that has seeds and can sometimes be eaten
- garden** a place to enjoy plants that are planted by people
- garden plants** plants that people choose to grow
- living things** things that grow, react to their surroundings, make new living things, need water and air; animals, humans and plants are all living things
- local area** the area close to where you live



nutrients the goodness found in food needed to stay healthy

nutrition the right foods that help living things to stay healthy

protects keeps safe

scientist a person who learns more about science as their job

seasons the four parts of a year: spring, summer, autumn and winter

seed a part of a plant that can grow into a new plant

shoot the first part of the plant to grow above ground

surroundings everything that is around a person, place or thing

vegetables a plant, or part of a plant that people eat

weeds plants that grow where people don't want them to

wild plants plants that grow wherever their seeds fall



39



40

Index

bark	20
bees	14
brambles	16
branches	19
bulb	7, 10, 32
bushes	29-30
carrots	34
clover	17
deciduous	23-24
evergreen	25-26
flowers	5-6, 8, 10-13, 15, 19, 20
fruit	5-6, 8, 12, 19, 27-30
garden plants	11-14

leaves	5-6, 8, 17-19, 23-25, 32
pumpkin	31
roots	5-7, 20
rose	11-12
seasons	23, 25
seed	6-8, 10, 15, 28, 31
spruce tree	26
stem	5-6, 8, 19
sunflower	7-8, 10
thistle	18
trees	1, 10, 19-26, 29-30
trunk	19-20
vegetables	27, 31-34
wild plants	15-18
wood	20-21